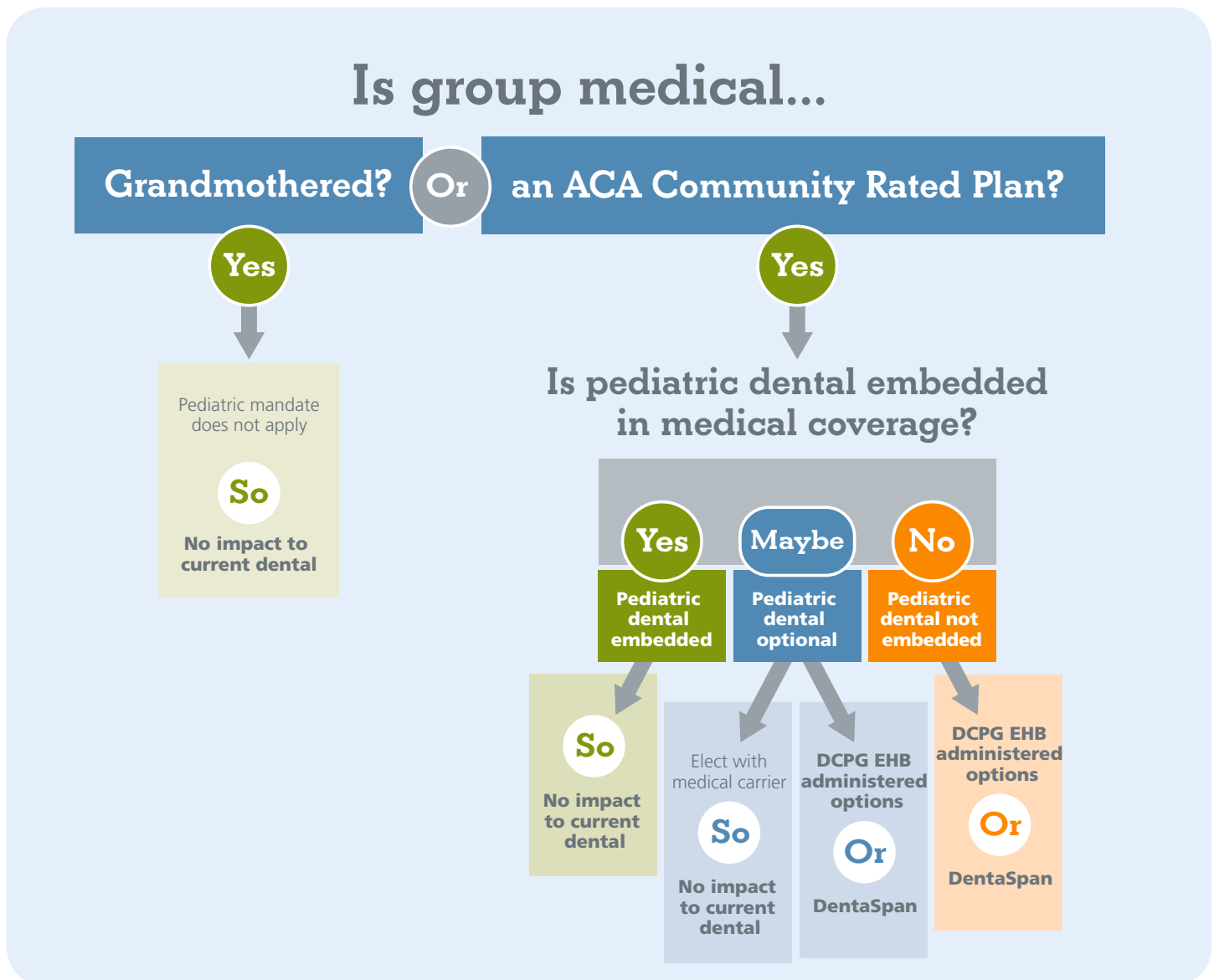


## Making Compliant Dental Decisions in Ohio

*Asking some key questions can help a group determine which path to take with their dental benefits, ensuring they are meeting the mandates of the Affordable Care Act.*

The first question to ask, as shown below, is if the group's medical is grandfathered OR an ACA Community Rated Plan. Follow the appropriate path of questions and answers to determine how the group's dental is ultimately impacted.

This information is applicable to small groups with less than 50 Full-Time Equivalents (FTEs).



For more information, call (800) 367-9466 or visit [www.DentalCarePlus.com](http://www.DentalCarePlus.com).